

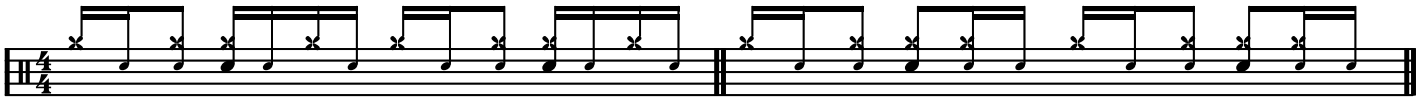
1/16 GROOVE ROUTINE (TEIL 4)

DOPPELGHOST 1 UND 2

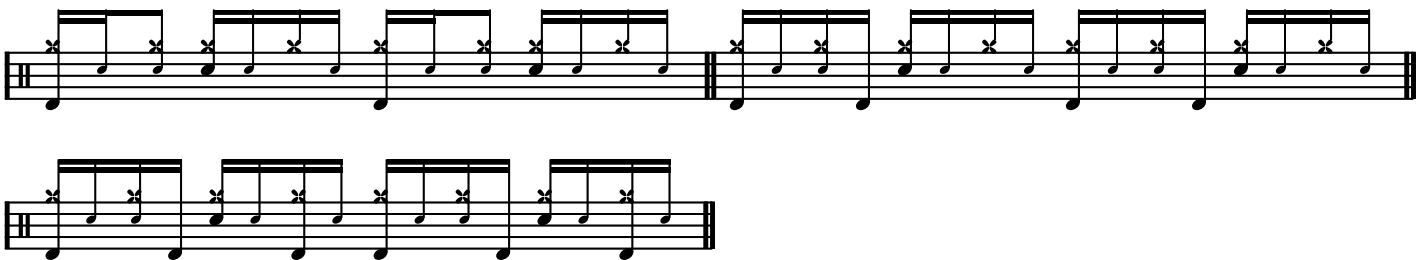
MIGRO 05

DOPPELGHOST 1

DOPPELGHOST 2



BASIC PATTERNS 1



GROOVE PATTERNS 1



BASIC PATTERNS 2

Two staves of musical notation for 'BASIC PATTERNS 2'. The first staff contains two measures of music, each with a double bar line at the end. The second staff contains four measures of music, each with a double bar line at the end. The notation consists of eighth notes with stems pointing up, and each note has a small 'x' mark above it. The notes are grouped in pairs across the measures.

GROOVE PATTERNS 2

Five staves of musical notation for 'GROOVE PATTERNS 2'. Each staff contains two measures of music, each with a double bar line at the end. The notation features eighth notes with stems pointing up, and each note has a small 'x' mark above it. The notes are grouped in pairs across the measures. The first measure of each staff includes a slash with a vertical line through it (//) after the first note, indicating a continuation of the pattern.

DIE OFF-BEAT HIHAT UND RIDE FIGUREN

Two staves of musical notation for 'DIE OFF-BEAT HIHAT UND RIDE FIGUREN'. The first staff contains two measures of music, each with a double bar line at the end. The second staff contains two measures of music, each with a double bar line at the end. The notation features eighth notes with stems pointing up, and each note has a small 'x' mark above it. The notes are grouped in pairs across the measures. The first measure of each staff includes a slash with a vertical line through it (//) after the first note, indicating a continuation of the pattern.