

DER DOPPELBASS STARTER

PENDELÜBUNG FÜR DIE FÜßE

♩ = 60 - 120

MIGRO 07

TRAINING FÜR DEN RECHTEN FUß (RF)

Musical notation for the right foot training exercise. It consists of a single staff with a treble clef and a 4/4 time signature. The notation is divided into three measures by double bar lines. The first measure contains a sequence of eighth notes. The second and third measures contain pairs of eighth notes with an asterisk above each pair, indicating a specific rhythmic pattern.

TRAINING FÜR DEN LINKEN FUß (LF)

Musical notation for the left foot training exercise. It consists of a single staff with a treble clef and a 4/4 time signature. The notation is divided into three measures by double bar lines. The first measure contains a sequence of eighth notes. The second and third measures contain pairs of eighth notes with an asterisk above each pair, indicating a specific rhythmic pattern.

SCHWERPUNKTKONTROLLE RF

Musical notation for the right foot focus control exercise. It consists of a single staff with a treble clef and a 4/4 time signature. The notation is divided into two measures by a double bar line. The first measure contains a sequence of eighth notes. The second measure contains a sequence of eighth notes with an asterisk above each note, indicating a specific rhythmic pattern.

Musical notation for the right foot focus control exercise. It consists of a single staff with a treble clef and a 4/4 time signature. The notation is divided into two measures by a double bar line. The first measure contains a sequence of eighth notes. The second measure contains a sequence of eighth notes with an asterisk above each note, indicating a specific rhythmic pattern.

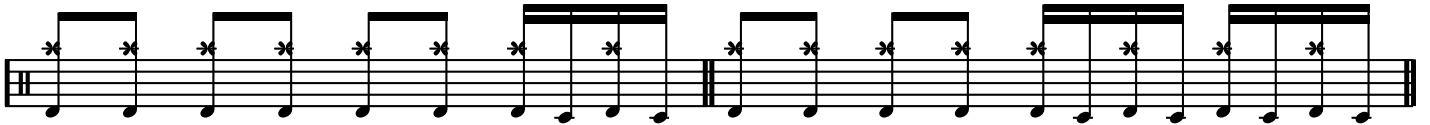
Musical notation for the right foot focus control exercise. It consists of a single staff with a treble clef and a 4/4 time signature. The notation is divided into two measures by a double bar line. The first measure contains a sequence of eighth notes with an asterisk above each note. The second measure contains a sequence of eighth notes with an asterisk above each note, indicating a specific rhythmic pattern.

Musical notation for the right foot focus control exercise. It consists of a single staff with a treble clef and a 4/4 time signature. The notation is divided into two measures by a double bar line. The first measure contains a sequence of eighth notes with an asterisk above each note. The second measure contains a sequence of eighth notes with an asterisk above each note, indicating a specific rhythmic pattern.

Musical notation for the right foot focus control exercise. It consists of a single staff with a treble clef and a 4/4 time signature. The notation is divided into two measures by a double bar line. The first measure contains a sequence of eighth notes with an asterisk above each note. The second measure contains a sequence of eighth notes with an asterisk above each note, indicating a specific rhythmic pattern.

Musical notation for the right foot focus control exercise. It consists of a single staff with a treble clef and a 4/4 time signature. The notation is divided into two measures by a double bar line. The first measure contains a sequence of eighth notes with an asterisk above each note. The second measure contains a sequence of eighth notes with an asterisk above each note, indicating a specific rhythmic pattern.

SCHWERPUNKTKONTROLLE LF



WIEDERHOLE JEDEN TALT 4-8 MAL UND GEHE DANN ZUM NÄCHSTEN!!